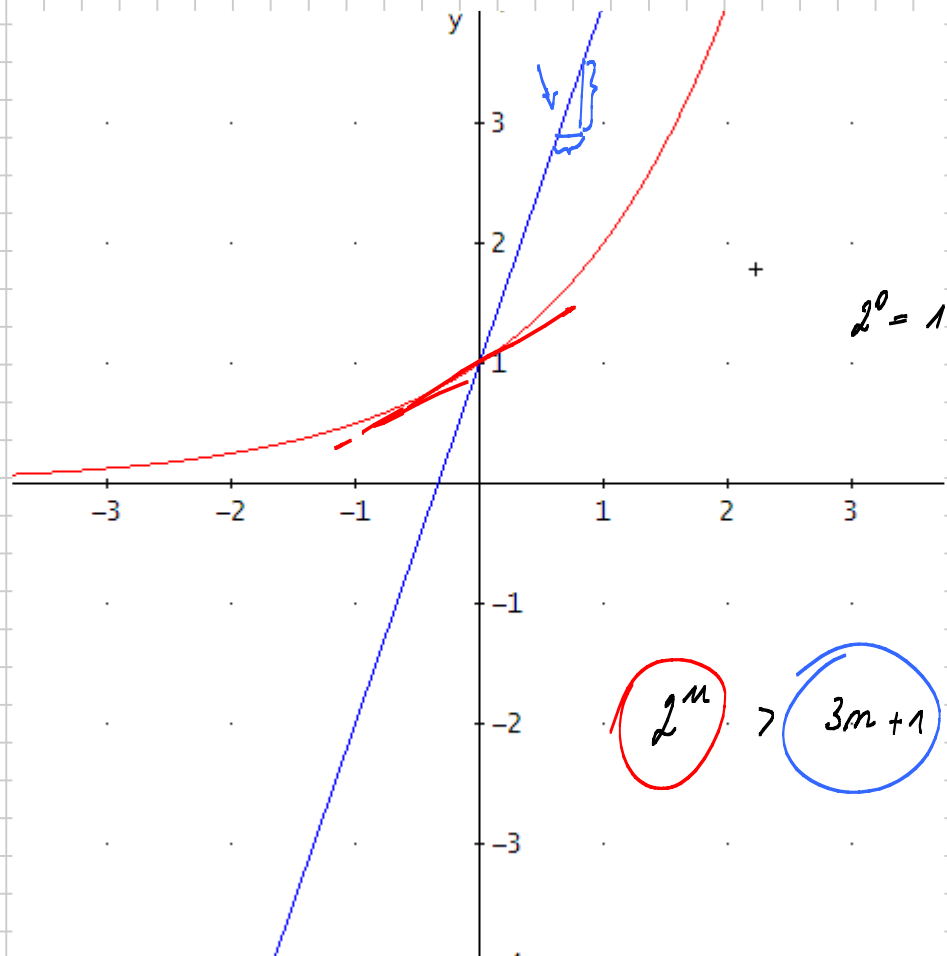


Aufgaben zur Exponentialfunktion

Notiztitel

21.05.2007



Test

$$x = 4$$

$$2^4 = 16$$

$$3 \cdot 4 + 1 = 13$$

$$x = 3$$

$$2^3 = 8$$

$$3 \cdot 3 + 1 = 10$$

Gleichung

$$2^m = 3m + 1$$

$$x = 3,5$$

$$2^{3,5}$$

$$11,313$$

$$3 \cdot 3,5 + 1 = 11,5$$

$$x = 3,6$$

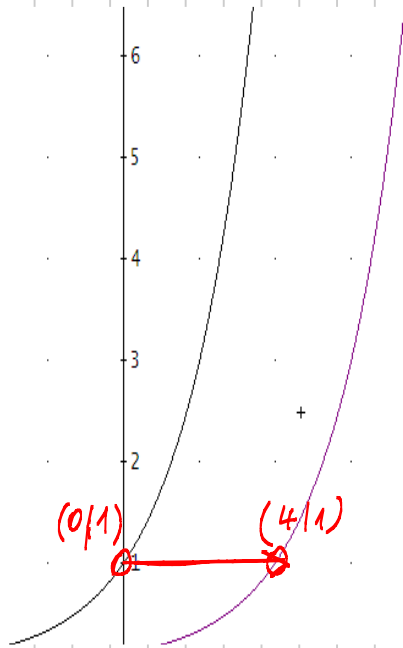
(76)

$$y = 1,2^{3(x-4)}$$

$$y = [1,2^3]^{x-4}$$

$$y = 1,728^{x-4}$$

$$y = \frac{1,728^x}{1,728^4}$$



$$\vec{a} = \begin{pmatrix} 4 \\ 0 \end{pmatrix} = \begin{pmatrix} 4 \\ 1 \end{pmatrix} - \begin{pmatrix} 0 \\ 1 \end{pmatrix}$$

